

ED POLICY BRIEF



Pathways to Postsecondary Success | Part 11

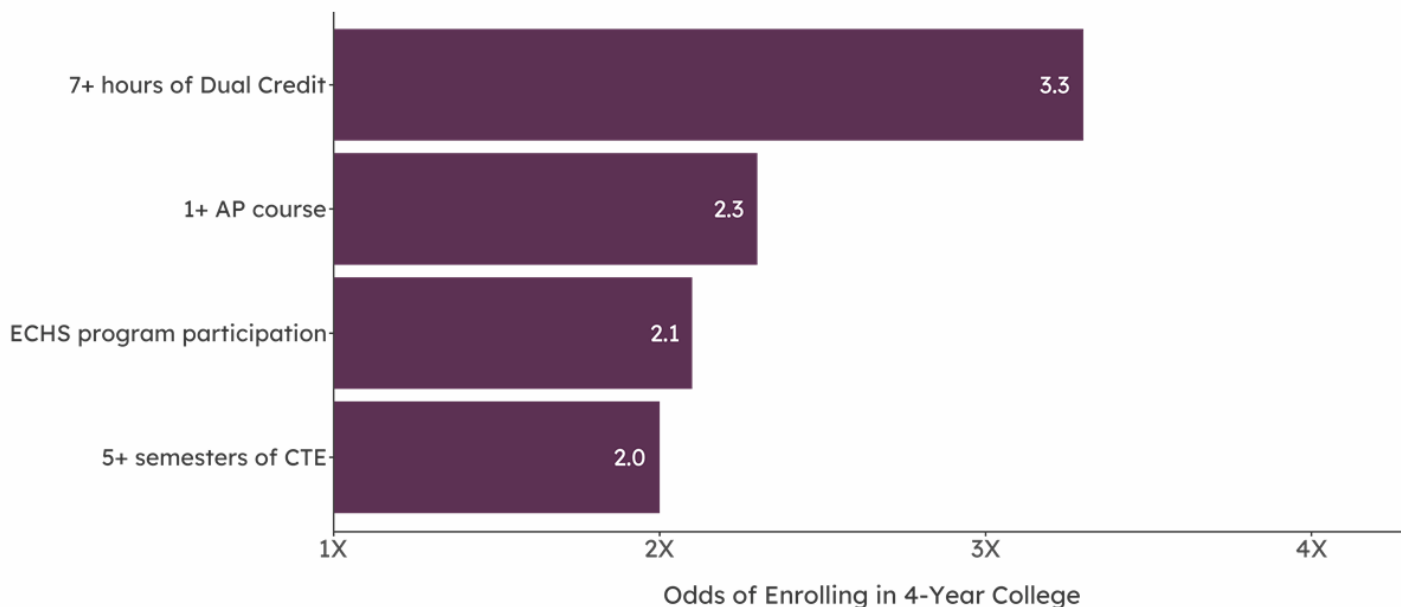
WHO WE ARE | EDUCATION. EQUALS. ECONOMICS.

E3 Alliance is a data-driven education collaborative based in Central Texas and now expanding work across the state. Our goal is to increase global competitiveness, economic vitality, and overall quality of life by aligning education systems to fulfill every student's potential.

WHAT WE KNOW | STUDENT SUCCESS ACROSS TEXAS

Data from the Central Texas class of 2021 reveals that college- and career-aligned coursework predicts postsecondary enrollment. This 88th Legislative Session presents a tremendous opportunity to make proven changes in our state's community college system to improve student outcomes, affect their postsecondary achievements, and lead Texas to a better workforce and economy.

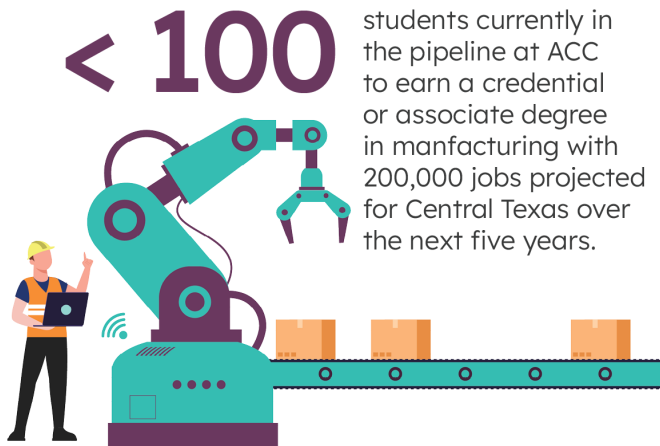
Odds of a Four-Year College Enrollment



Our research and data systems team announced the release of new interactive content on the E3 Alliance data portal at data.e3alliance.org. You can now engage with dual credit course-taking, career and technical education, pre-K utilization, and kindergarten literacy assessment data. Plus, you will find more in-depth data to [middle school](#) and [high school math pathways chapters](#). Use the legislative filter to navigate to your district data and choose to compare with the state or another Senate or House district.

THE PROBLEM

- Austin Community College reports less than 100 students currently in the pipeline to earn a credential or an associate degree in manufacturing.
- Economists predict the Central Texas region to boast 20,000 jobs in manufacturing over the next five years.



WHY IT IS IMPORTANT

Postsecondary enrollment increases for our students when they participate in college- and career-aligned coursework during high school.

- **Over three times greater** for students who took three or more hours of dual credit compared to those who did not.
- **Over two times greater** for students who took five or more semesters of Career and Technology Education courses compared to those who did not.
- **Over two times greater** for students who took one or more Advanced Placement courses compared to those who did not.
- **Over two times greater** for students who participated in an Early College High School program compared to those who did not.
- **Over 1.5 times greater** for students who received one or more International Baccalaureate courses compared to those who did not.

THE SOLUTION

- **Pass House Bill 8** that will develop a modern community college finance model that distributes the majority of state funding based on measurable outcomes.
- **Pass Senate Bill 1887** that will increase transfer of course credit for students engaging in early college education programs among public institutions of higher education.

Access E3 Policy Priorities

Access the Math Policy Brief

Susan Dawson | President & Executive Director

[Jennifer Cavazos Saenz](#) | Senior Director of Strategic Initiatives & Continuous Improvement | jsaenz.e3alliance.org

e3alliance.org
data.e3alliance.org

Please visit our [Education Profile](#) for more education trends and outcomes in Texas and be sure to follow us on Twitter for regular updates about our policy agenda.

Thank you for your dedication to every student in Texas, and we look forward to working with you during the 88th Legislative Session. Please contact [Jennifer Cavazos Saenz](#) for data or policy inquiries.