



E3 ALLIANCE
EDUCATION EQUALS ECONOMICS

To transform education systems through data and collaboration so all students succeed.

Susan Dawson
President &
Executive Director

Jennifer Cavazos Saenz
Senior Director of
Strategic Initiatives
& Continuous
Improvement

POLICY BRIEF: PATHWAY TO POSTSECONDARY SUCCESS, PART 2

WHO WE ARE

E3 Alliance is a data-driven education collaborative based in Central Texas and now expanding work across the state. The organization’s goal is to increase global competitiveness, economic vitality, and overall quality of life by aligning education systems to fulfill every student’s potential.

WHAT WE DO

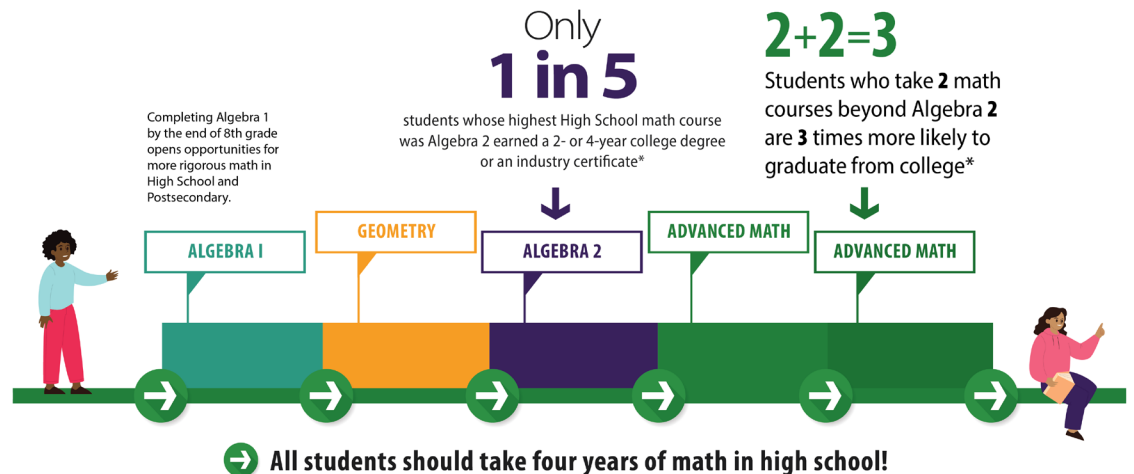
High school students who complete four years of math and take an advanced math course in their senior year more than double their chances of postsecondary completion. Advanced math course options include Advanced Placement (AP), Dual Credit, and International Baccalaureate (IB), to name a few.

THE PROBLEM

- Only 23% of Hispanic students complete a college-aligned math course in high school prior to graduation.
- Many school districts across the state lack the adequate credentialed staff and/or resources to offer college-aligned courses for students to engage.

WHY IT IS IMPORTANT

- Taking four years of math in high school highly correlates with student readiness and persistence in postsecondary education.
- Students from low-income households in Texas continue to see a significantly lower number of dual credit hours earned when compared to students from non-low-income households.



* within 6 years of High School graduation

Source: E3 Alliance analysis of PEIMS and THECB data at the UT Austin Education Research Center

THE SOLUTION

Access and Opportunity: Require students to take math all four years of high school and districts to make advanced math or dual credit courses easily available on campuses. Also, allow institutions of high education to use multiple measures for assessing a student’s college readiness in math, so they engage in college-aligned courses early in their postsecondary education to maximize success and matriculation.

e3alliance.org
data.e3alliance.org

